

NOTES ON GEOGRAPHIC DISTRIBUTION

Reptilia, Testudines, Chelidae, *Platemys platycephala platycephala*: Distribution extension

Flavio de Barros Molina¹
Henrique Caldeira Costa²
Vinícius de Avelar São Pedro²
Renato Neves Feio²

¹ Universidade Cidade de São Paulo, Cursos de Ciências Biológicas, Gestão Ambiental e Engenharia Ambiental. Rua Cesário Galeno 448/475, Tatuapé. CEP 03071-000. São Paulo, SP, Brazil. E-mail: fbmolina@uol.com.br

² Universidade Federal de Viçosa, Museu de Zoologia João Moojen. Vila Gianetti 32. CEP 36570-000. Viçosa, MG, Brazil.

The South American chelid genus *Platemys* includes only one species, *Platemys platycephala* (Schneider 1792), characterized by small size (less than 18 cm carapace length), a very flat carapace with a preeminent vertebral groove, and a head that is orange-brown colored dorsally (Pritchard and Trebbau 1984; Ernst 1987; Ernst and Barbour 1989). The species presents two subspecies: *Platemys platycephala platycephala* (Schneider 1792) and *Platemys platycephala melanonota* Ernst 1984 (Turtle Taxonomy

Working Group 2007). *Platemys p. melanonota*, a darker subspecies, is found in Peru and Ecuador while *Platemys p. platycephala* is found in the Guianas, Venezuela, Colombia, Brazil and Bolivia (Ernst 1983; 1987; Pritchard and Trebbau 1984).

At present, there is only one record of *Platemys p. platycephala* in state of Mato Grosso, Brazil, from Culuene river (Ernst 1983; Pritchard and Trebbau 1984; Iverson 1992), a tributary of the Xingu river, located in eastern Mato Grosso.



Figure 1. Specimen of *Platemys platycephala platycephala* (MZUFV 47) from municipality of Aripuanã, state of Mato Grosso, Brazil. Photo by V. A. São-Pedro.

NOTES ON GEOGRAPHIC DISTRIBUTION

The *Museu de Zoologia João Moojen*, at *Universidade Federal de Viçosa*, municipality of Viçosa, state of Minas Gerais, Brazil has two specimens of *Platemys p. platycephala* housed in its herpetological collection (MZUFV 35, caparace length 143 mm and plastron length 133 mm; MZUFV 47, caparace length 83 mm and plastron length 47 mm, Figure 1), both from small streams inside primary forest on the left bank of the Aripuanã river, a tributary of the Madeira river, in the area of influence of Dardanelos Power Plant, municipality of Aripuanã, northwestern state of Mato Grosso ($10^{\circ}9'47.02''$ S,

$59^{\circ}26'50.95''$ W and $10^{\circ}8'29.03''$ S, $59^{\circ}26'11.85''$ W, respectively). The area is covered with submontane tropical rainforest, in the Amazon domain.

These specimens of *Platemys p. platycephala* represent the second record for the state of Mato Grosso and the first record in Aripuanã river basin. Locality where they were collected is *ca.* 780 km northwest of the locality in the Culuene river (state of Mato Grosso), and *ca.* 625 km south of the nearest locality in the Madeira river (state of Amazonas) (Iverson 1992) (Figure 2).

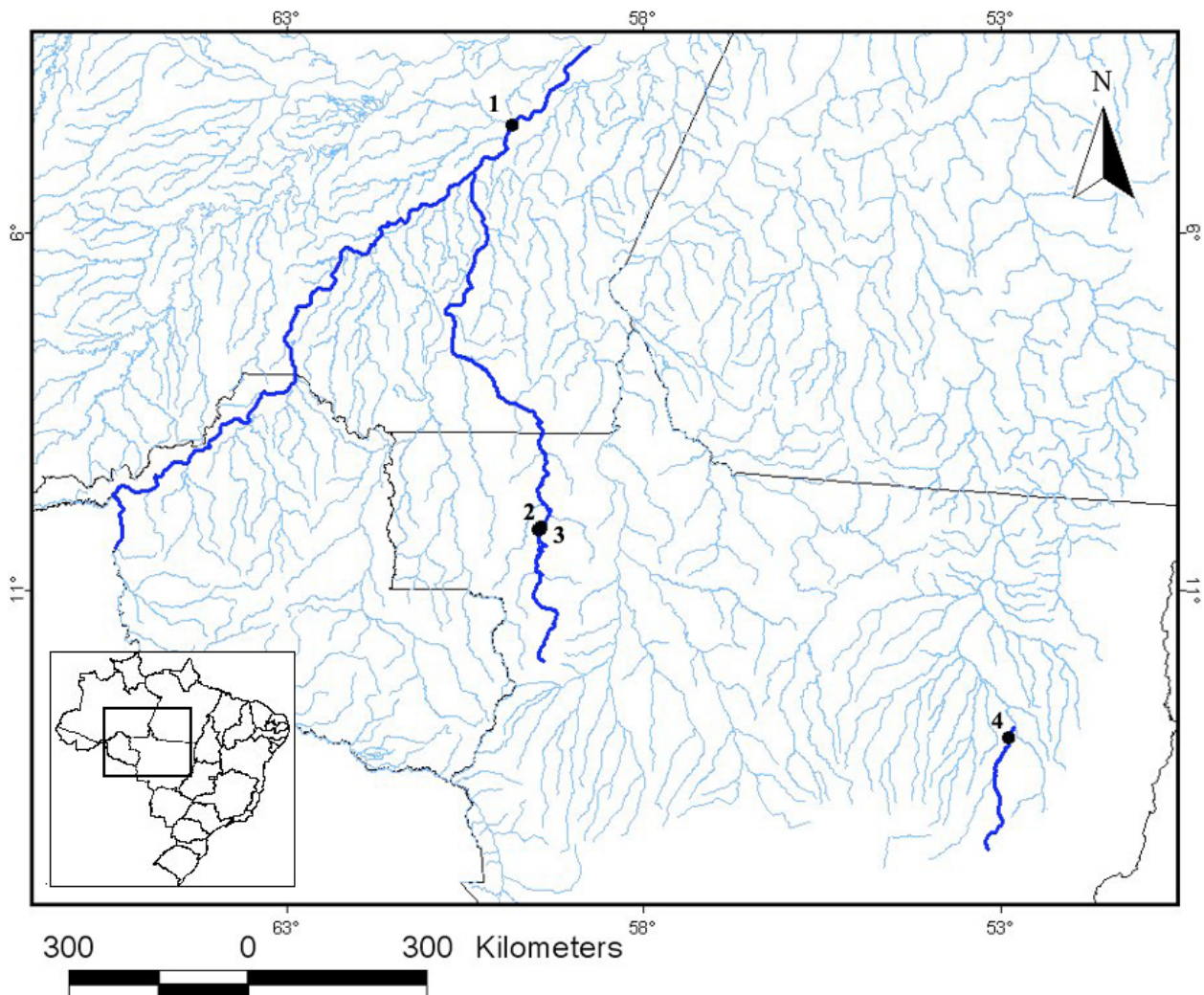


Figure 2. Localities with known occurrence of *Platemys platycephala platycephala* in state of Mato Grosso, Brazil, and the nearest locality in state of Amazonas. 1, Madeira river (Iverson 1992); 2 and 3, Aripuanã river (present work); 4, Culuene river (Ernst 1983).

NOTES ON GEOGRAPHIC DISTRIBUTION

Acknowledgments

We thank *Energética Águas da Pedra S.A.* for financial support, Ulisses Caramaschi for helping in fieldwork and Mário R. Moura for kindly drawing the map. The final version was critically evaluated by Franco Leandro de Souza and Marinus S. Hoogmoed.

Literature Cited

- Ernst, C. H. 1983. Geographic variation in the Neotropical turtle, *Platemys platycephala*. *Journal of Herpetology* 17(4): 345-355.
- Ernst, C. H. 1987. *Platemys, Platemys platycephala*. *Catalogue of American Amphibians and Reptiles*. 405: 1-4.
- Ernst, C. H. and R. W. Barbour. 1989. *Turtles of the world*. Washington, DC: Smithsonian Institution Press. 313 p.
- Iverson, J. B. 1992. A revised checklist with distribution maps of the turtles of the world. Richmond, Indiana: Privately Printed. 374 p.
- Pritchard, P. C. H. and P. Trebbau. 1984. The turtles of Venezuela. *SSAR Contributions to Herpetology* 2: 1-403.
- Turtle Taxonomy Working Group. 2007. An annotated list of modern turtle terminal taxa with comments on areas of taxonomic instability and recent change. *Chelonian Research Monographs* 4: 173-199.

Received February 2009

Accepted September 2009

Published online September 2009